

GRAFF

Finezza

GRAFF, a company that stands out for its innovative technology and exclusive solutions in the faucets field presents Finezza, their newest faucet collection for bathrooms. The faucet's main body has been developed in a shape that relies on a unique horizontal section that is wider at the base and at the top and slimmer in the middle. The spout recalls the design of the body, starting with a trapezoidal section which expands slightly at the end to accommodate the water-saving

aerator. The collection is available in polished chrome or polished nickel that can easily adapt to a transitional environment, or in olive bronze, the brushed nickel, matte gold and polished gold finishes. The typical 'retro' style of the Finezza collection is declined with a more modern accent in the second version available within the series: Finezza DUE, characterised by a soft, elegant line that accompanies the faucet body to the base without interruptions.

GRAFF INDIA
graff-faucets.com



FIBEXINSIDE 502.55

Agostini Group

Made with a central insulating and structural core in Fibex, a composite material that offers the relevant properties of thermal insulation, resistance and structural stability that mean that sections can be reduced in order to bring more light into the room, these windows achieve particularly low levels of thermal transmittance, with U_f (frame only) = $1.0 \text{ W/m}^2\text{K}$ and U_w (the whole window) up to $0.72 \text{ W/m}^2\text{K}$. In terms of the profile of materials, the inner part of the window is in solid wood while the outer part is in aluminium.



AGOSTINI GROUP
www.arritalcucine.com

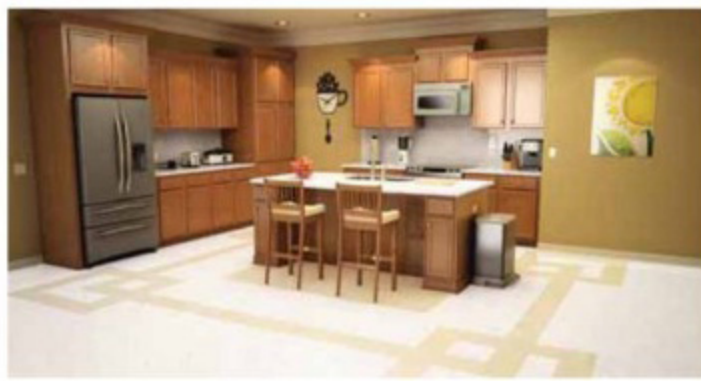
H&R JOHNSON

Top Shield

Johnson Top Shield is a pre-fabricated, ready-to-install and germ-free quartz kitchen countertop. It is manufactured with a special anti-microbial formula which is also certified as food-grade. Developed through the fusion of pure natural quartz and with Johnson's technical expertise, it offers the beauty of natural granite without the maintenance associated with it. Top Shield has a host of other advantages over granite as well. It is as strong as the natural stone, but

requires no resealing, and is highly resistant to scratches and stains. It is a pre-fabricated drip-free kitchen countertop which hugely reduces the hassles of installation and labour cost hence making it highly conducive for modular kitchens. Johnson Top Shield is available in a variety of textures and colours. The standard dimension available is 10ft x 28.5 inches and the standard thickness is of 18mm.

H&R JOHNSON
hrjohnsonindia.com



VIEGA

Pexfit Pro Fosta

One of the innovative installation products under composite pipe systems, the Pexfit Pro Fosta range is both flexible and durable. Made of physically cross-linked polyethylene (PE-Xc), these pipes are temperature- and pressure-resistant as compared to CPVC pipes, and insensitive to corrosion and incrustation. A Pexfit Pro Fosta series variant has three layers — a PE-Xc internal pipe; an aluminium layer; and white external coating — thereby making the form of the pipe stable, i.e. once bent into close radii, the pipe permanently retains this shape, eliminating the need for elbow joints. The Pexfit Pro system

comes with the advantage of Viega's press connection technology to ensure leakage-proof joints. Once crimped using the Viega press tool (tool calibration and bevelling are not required), the joints become permanently leak-proof. Whether made of polyphenylsulfone (PPSU) or red brass, Viega's press connectors feature the SC-Centur. SC-Centur makes unintentionally unpressed joints easily visible during a leakage test or when the system is filled. A complete installation can be inspected centrally on the manometer as long as the components are all fitted with the SC-Centur.

VIEGA
viega.com

