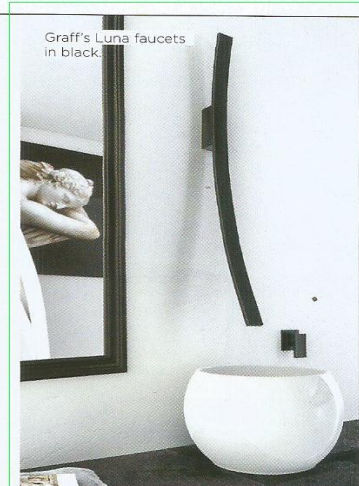


Closer range, designed by Diego Grandi for Zucchetti Kos, available at Intersekt.



Graff's Luna faucets in black.

Isvea and Senator that fit the bill perfectly. Controlled use of gold and metallic inserts in tiles help to complete the look. Vitra's X-line faucet is available in a sophisticated gold shade that can instantly uplift the bathroom decor with its soft contoured lines. Durable, with energy-efficient and water saving features, this elegant faucet is an eco-friendly beauty that anyone would love to have.

"A hint of gold used in the frames of the mirror, around the edges of counters or in the accessories, goes a long way in adding glamour to the space. Even gold tiles are a huge hit these days," says Meenu.

### Colour power

When it comes to colour, in order to ensure a seamless flow of spaces, often the colours of an en suite is connected to those in the bedroom. Where, a monotone scheme is considered to be simple but stylish, single and vibrantly colourful statement pieces stand out in the entire space. In an all-white bathroom, you can still add colour by painting the doors, walls, ceilings, or just colourful mosaic tiles. To create an Oriental or spa feel, use beiges, browns, greens and greys, to create a soothing effect. Keramos has a range of tiles in muted shades for those looking for pastel looks. Graff has expanded the offering of powder coating colour finishes for most of its faucet collections and for special requests is can develop any kind of colour for its products. Worth admiring for its range of colours, the Admiral Tub from Devon & Devon, available at Keha Casa is a freestanding cast iron bathtub. The external finish is primed and prepared for a final coating, and can be finished in any colour from the water-soluble enamel of

the Colours Collection. Comprising more than 500 water dilutable matt colours, this collection makes it an incredibly versatile range with both classic and modern colours. Eagle feet in polished aluminium is also available in Decò and Shield style feet in natural aluminium, polished brass and white enamel.

LIXIL's other brand, American Standard's Genie Hand Shower comes in three pretty colours and has a robust shower pressure that is gentle on the skin. It allows easy removal of lime scale, mould or

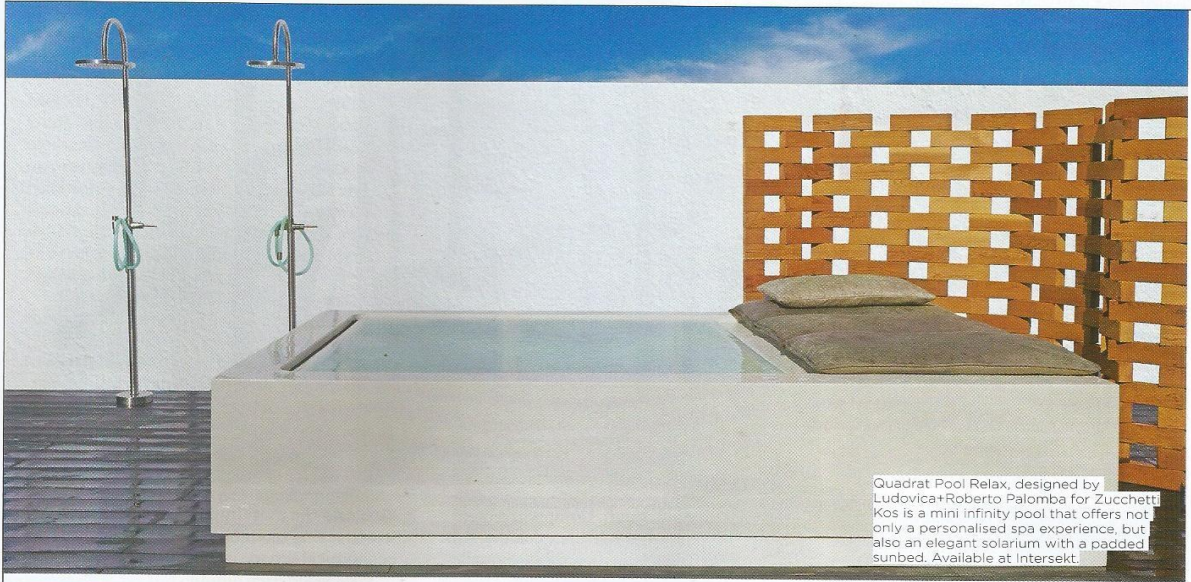
dirt. And the most important, has in-built water-saving technology for ecological and economical sense.

### Wallpaper art

Want a quirky, sophisticated or impactful work of art? Use wallpapers to create a dramatic accent wall. Adding striking patterns and style, innovative wallpaper designs are just the right thing to add on to your bathroom aesthetics. The Costarica Wallpaper collection from Devon & Devon



Hand-made ceramic bathroom surfaces by Orvi



## NATURAL LIGHT

- \* If you have the pleasure of enjoying panoramic views from your bathroom, it's fine not to screen the windows, if your bath is not overlooked. You can avoid covering it and let it act as a frame to the view outside and also let in the natural light.
- \* In areas where there is direct sunlight access throughout the day, blinds are perfect for the windows. You can keep them closed or modify them in order to lessen the light impact. The blinds can be raised during the day to make the most of the natural light available.
- \* When it comes to covering windows and equally allowing access to natural light, opt for opaque glass screens for the windows or even use large glass panels with electronically controlled translucency. Privalite glass turns from clear to opaque, just at the press of a button.
- \* For a windowless bathroom, go for a semi-opaque glass panel in the door to bring light in from the room or passage outside it.

is an exotic forest of banana leaves in metallic, eclectic shades of colour. The wallpaper is available in five colours: dust, green, petrol, purple and wine.

According to Ashok Basoya of Ottimo, "Woven wallpaper with glass fibre is a great idea for bathrooms. It is moisture and heat resistant, durable and available in an impressive range of designs. Interestingly, it can also be used for floors to achieve a complete, aesthetically pleasing look."

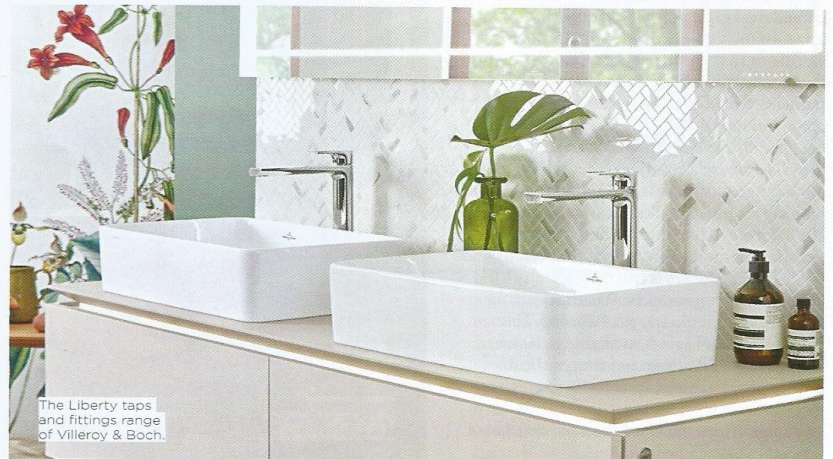
"Installing wallpapers is easier than ever before with a variety of adhesives that makes it fool-proof and protects it from moisture and humidity issues. Modern splash-proof wallpapers, that are often also wipeable, make the deal even more attractive. However, it is

safer to use them on dry walls. You can either choose to cover the entire bathroom with wallpaper, or just an accent wall that is likely to stay dry all the time. They are especially ideal for powder rooms without a shower area," says Sachin Gupta of Beyond Designs.

## Raw & natural

Get inspired by nature and experiment with raw materials for moments soaked in pure bliss.

According to Maurizio, "Raw materials have always found a niche of lovers for their look, recalling nature and unprocessed elements. Graff offers eight of its most successful faucet collections in unfinished brass and unfinished brushed brass. These finishes are considered





Cera's Luna White tiles.



H & R Johnson's Porselano RCS tiles that are germ free, stain free, slim and very strong.

## CHECKS: ELECTRICALS

- \* Electricals need to be well-planned and for feature lighting, lights concealed under shelves and in the shower, it is advisable to take professional help for installation.
- \* According to Interior Designer Payal Kapoor, "Electricals have to be planned at board stage only. Items like defoggers, change over switches, 6/16 amp switch plates near the basin, point for AC, heater, music, and TV controls all should be thought out well in a luxury bathroom. Switches should be in a dry area near the entrance as controls."
- \* "Again, warm light for general dressing or mood lighting, depending on the look and feel of the bathroom, should be planned well in the electrical planning stage itself. You also need to plan ample light for the dress up and dry counter area," she adds.
- \* Electrical equipments in a bathroom should necessarily be moisture-sealed and steam-and water -safe.
- \* Even the speakers or TVs should be installed by a professional. The speakers can be easily recessed in the walls or even ceilings and the same can be done with the TV screens.
- \* According to Hardesh Chawla of Essentia Environments, "Since the bathroom is a place that experiences high moisture and humidity, it is essential to take care of wattage issues and align all functions neatly. Also, it is ideal to plan your electrical wiring along with plumbing to create a flawless look."

"living finishes" intended to change in appearance over time. They will develop a unique character and weather aspect based on the environment and individual use."

Inspired by nature and the elegant fluid lines of contemporary architecture, an elegant faucet Artize Tailwater by Jaquar Group was conceptualised and designed by the London-based product design consultancy Danelon Meroni, led by Claudia Danelon. The striking and iconic piece of bathroom fitting is inspired by the abstract image of a bird, perched on the edge of a pool. The lever and spout are united in a single, friendly form, which is simple and enjoyable to use. The Tailwater is crafted in brass and is available in chrome, copper, bronze, matte black and matte white finishes.



Somy's Evita i-Gen smart toilet that can be controlled with a remote.

"Bringing in the raw and natural element allows you to escape from the otherwise practical and sterile environment of a bathroom. Raw materials like stones and wood can be used to create a natural vibe. Dryscape with pebbles and plants can bring in more life. Accessories or lights fashioned out of natural materials like clay, jute, bamboo or wood, also look wonderful," says Meenu.

Inspired by Istanbul's culture and traditions, the Vitra's Istanbul series is designed by Ross Lovegrove. The collection is inspired by nature and the fluidity of water. The collection is a continuation of a natural and sophisticated line of the Istanbul series which includes the sink cupboard, an Infinit sink, illuminated mirror, urinals, washbasin and fixtures.

INAX, the Japanese bathroom brand, brought to India by LIXIL, manufactures decorative tiles made of clay. They also have shower toilet, self-powered hands-free faucet, and interior tiles that freshen the air in the room. INAX creates beautiful, innovative bathrooms that bring to fore the Zen lifestyle that make everyday life easier, healthier and more enjoyable.

## Dark drama

Set the mood for a complete hedonistic experience high on drama and appeal.

"Black is one of the most requested colours this year, both for faucets and bathroom accessories. With its sophisticated design and additional

## BUYER'S / GUIDE



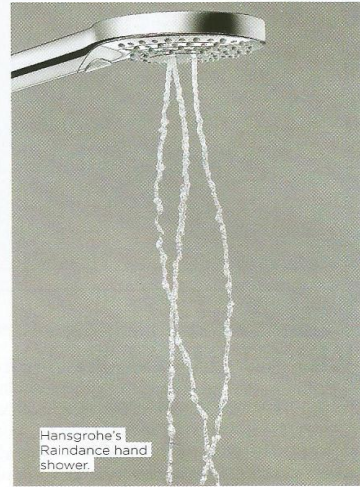
Silkstone shower tray by Zucchetti KOS, available at Intersekt.



EasySET Exposed, the auto temperature mixers by American Standard.



Insignia faucet collection from Roca.



Hansgrohe's Raindance hand shower.

functionalities, Graff's Ametis collection — designed by Davide Oppizzi — adds a dramatic effect to the bathroom and the shower area, enhancing the whole environment with a 6-colour LED and chromotherapy," says Maurizio.

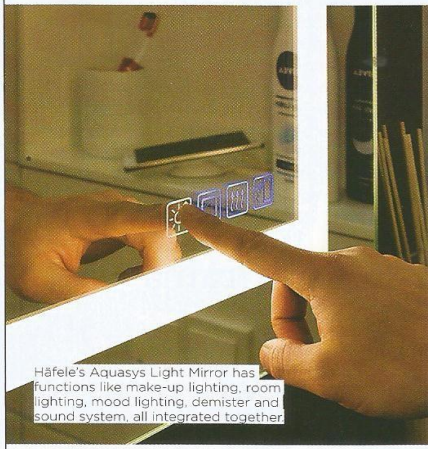
And, living up with the dark drama look, Vitra's Memoria Black series is designed by the world-renowned designer Christophe Pillet. Slim profile, gracefully

angular forms and with a masterful play on nuances, the series components are complemented by smartly thought out details, adding up to an exclusive bathroom experience.

Look wise, Payal says, "create very dark walls or use dull gold or black mirror as cladding above 4 ft of the wall, till a full height of the ceiling. The ceiling also can be all dull mirrors reflecting the dark

flooring. Copper faucets gel very well with this look. Also, ensure that the lights used have to be very dull or indirect and if possible, corner drop down pendants can further create a mystical environment."

"By using luxurious black granite that runs from flooring to counters to the walls, you can create a glamorous look," adds Sachin.



Häfele's Aquasys Light Mirror has functions like make-up lighting, room lighting, mood lighting, demister and sound system, all integrated together.

## MIRRORS

- \* "Mirror — this magical material always helps to bring more depth to the area and you can use it to cover walls and design nice mirror tops for your vanity. Play with different colours of mirror—like smoky or copper or gold mirror and add style to your powder room," Leila Erfan, Director, Aria Interior Design Pvt Ltd.,
- \* Extending the mirror below the basin, as well as above can instantly give an illusion of height to the space.
- \* Mirrors placed above the basins and in front of the window reflects the light and view from the window behind — the idea is to make the space look more refreshing, open and inviting.
- \* "Create the illusion of a lighter, more spacious bathroom with the addition of large, space-enhancing mirrors. Long and tall mirrors used strategically exaggerate the size and feel of a space. However, opt for size, shape, and style that best suits your bathroom," suggests Hardesh.
- \* Mirrors in moulded glass with bevelled edges can be used to create a framing effect. The Fairy Mirror from Devon & Devon, with its art nouveau curves, celebrates the mirrors typical of early twentieth century European cafés.