

Happenings



Canyon Creek Cabinet Co. has promoted **BOB FOOTE**, former company executive vice president, to president. He has been with the company for more than 20 years and offers extensive cabinet industry manufacturing experience and team-building leadership skills.

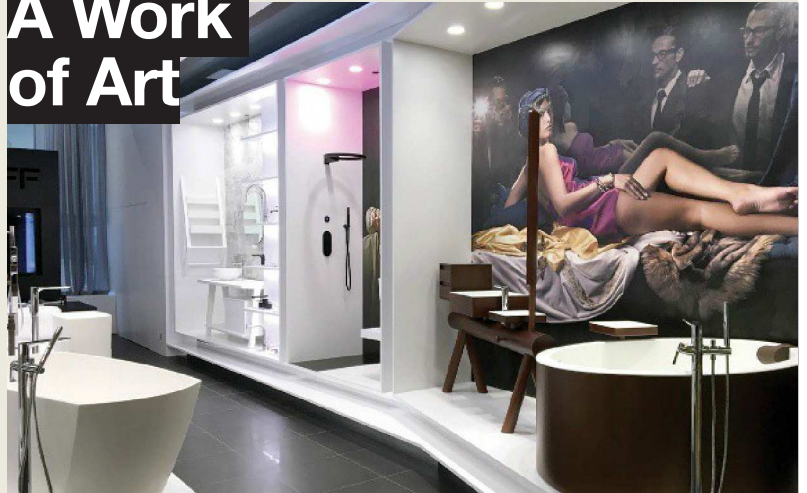


LISA KNIERIM has been named president, Americas, at Villeroy & Boch and will be responsible for the sales and marketing divisions of bath and wellness and tableware. She has served various positions with Jarden, Black & Decker and Westpoint Stevens.



NATIVE TRAILS won 2016 GREEN GOOD Design Awards for two of its bathroom sinks – the Palomar Vanity Top with Integral Sink (shown) and Trough 48. The Palomar is made of NativeStone, the company's blend of cement and natural jute fiber.

A Work of Art



GRAFF HAS OPENED ITS NEWEST U.S. SHOWROOM in the LuxeHome section of the Chicago Merchandise Mart. Its theme is called "Art of the Bath Gallery" and was developed by Italian product designer Davide Oppizzi in collaboration with DCube Design. The showroom features five pieces of artwork by international photographer, Vincent Calmel, that complement one of the company's product collections.

In the Spotlight



ACCENT LIGHTING IN LAKE OSWEGO, ORE., RECENTLY WON the 2016 Showroom of the Year award from the Dallas Market Center and *Residential Lighting Magazine*. The 5,000-sq.-ft. location won the "Under \$5 Million" category, and the company features the only American Lighting Association-certified lighting consultants in Oregon.

BACK TO SCHOOL

WANDA GOZDZ, CAPS, PRESIDENT OF DEERFIELD, FLA.-BASED GOLDEN AGE LIVING, LLC, and 2014 CAPS Educator of the Year, will lead a series of NAHB-CAPS designation courses this year. The three-day courses are geared toward interior designers, builders, remodelers and architects interested in senior housing projects and will take place on Oct. 19, 20 and 21 and Nov. 21, 22 and 23 at the Allied Kitchen and Bath showroom in Oakland Park, Fla.



What's Hot



5

What's Hot in Kitchen Faucets



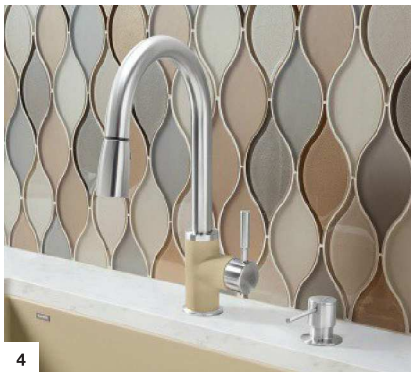
1



2



3



4



6



7



8



9

1. New from **AMERICAN STANDARD**, the Selectronic Beale kitchen faucet helps reduce the risk of cross-contamination in food preparation with wave-on/wave-off functionality. The faucet also boasts the option of switching to manual operation.

2. M.E., the latest kitchen faucet from **GRAFF**, is characterized by a modern, clean design and a solid brass structure. The faucet is equipped with a pullout spray and ergonomic grip ideal for daily activities.

3. **CALIFORNIA FAUCETS** introduces the Italian-inspired Rosolina Pull-Down Kitchen Faucet as part of the company's Kitchen Collection. The faucet's tulip-shaped silhouette reflects the essence of the beach lifestyle in northern Italy.

4. **BLANCO** presents eight new dual finishes and new CalGreen water-waving models for its Sonoma faucet. Designed with convenient features such as an ergonomic pull-down with dual-spray functionality, Sonoma is available in a standard 2.2 GPM or in 1.8 GPM and 1.5 GPM CALGreen models for greater water savings.

5. With five styles to satisfy a number of design aesthetics, **TOMLINSON INDUSTRIES'** Reverse Osmosis faucets feature a lead-free brass body; smooth-operating, lever-style handle; and a protective spout tip to prevent after-drip.

6. **WATERMARK DESIGNS** introduces the TOD, a kitchen faucet that incorporates linear valve technology into the handles, creating a decorative solution to ADA-compliant sink options. This technology enables the user to turn water off and on with a flick of a closed hand.

7. The Essence New kitchen faucet from **GROHE** features a smaller cartridge for a sleeker look and an integrated temperature limiter that can be individually set to the desired maximum water temperature to prevent scalding. Additional features include a dual spray with toggle function and EasyDock System for smooth retraction and docking of the faucet.

8. Now available in the U.S., the **QUATREAU** Tap faucet is the only multi-functional, touchscreen tap to deliver both tap water and pure water with instant boiling, chilled or sparkling options in just a touch.

9. **CINATON's** K2002 pull-out kitchen faucet includes five strategically placed infrared sensors and 13 functions, including the control of water volume and temperature. It features a dual-function spray head and a swivel spout and can save users up to 70 percent in water usage.